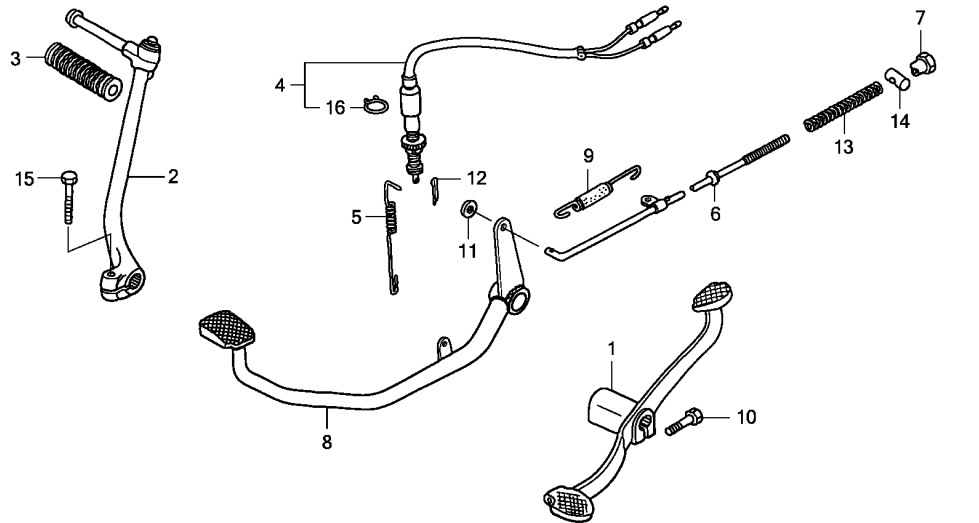


F-17-1

PEDAL/KICK STARTER ARM (ANF100DR/SR/MSR)

I10



KRSMF1701A

Ref. No.	L.O.N.	(Relative ref. Number) Description	F.R.T.
1	4101A1	PEDAL, GEAR CHANGE .....	0.1
2	112107	ARM, KICK STARTER .....	0.1
4	6151B5	SWITCH, REAR STOP :PEDAL SIDE .....	0.6
6	811135	ROD, REAR BRAKE .....	0.3
8	810160	PEDAL, REAR BRAKE .....	0.5

Ref. No.	Part No.	Description	Reqd. QTY					Serial No.	Parts catalogue code
			NF100		ANF100				
			4	5	6	8	9		
1	24701-KRS-690	PEDAL, GEAR CHANGE .....	-	-	1	1	1		
2	28300-KTL-740	ARM ASSY., KICK STARTER .....	-	-	1	1	1		
3	28311-342-000	RUBBER, KICK STARTER .....	-	-	1	1	1		
4	35350-KPH-B31	SWITCH ASSY., RR. STOP .....	-	-	1	1	1		
5	35357-KCC-900	SPRING, STOP SWITCH .....	-	-	1	1	1		
6	43451-KTL-690	ROD COMP., RR. BRAKE .....	-	-	1	1	1		
7	43459-GN5-760	NUT, BRAKE ROD ADJUSTING .....	-	-	1	1	1		
8	46500-KTL-740	PEDAL COMP., BRAKE .....	-	-	1	1	1		
9	46513-KBP-900	SPRING ASSY., RR. BRAKE RETURN .....	-	-	1	1	1		
10	92101-06020-0A	BOLT, HEX., 6X20 .....	-	-	1	1	1		
11	94101-05000	WASHER, PLAIN, 5MM .....	-	-	1	1	1		
12	94201-20150	PIN, SPLIT, 2.0X15 .....	-	-	1	1	1		
13	95014-73100	SPRING A, BRAKE ROD .....	-	-	1	1	1		
14	95015-32001	JOINT B, BRAKE ARM .....	-	-	1	1	1		
15	95701-06025-00	BOLT, FLANGE, 6X25 .....	-	-	1	1	1		
16	90601-KAF-003	CLIP, SWITCH COVER .....	-	-	1	1	1		

3