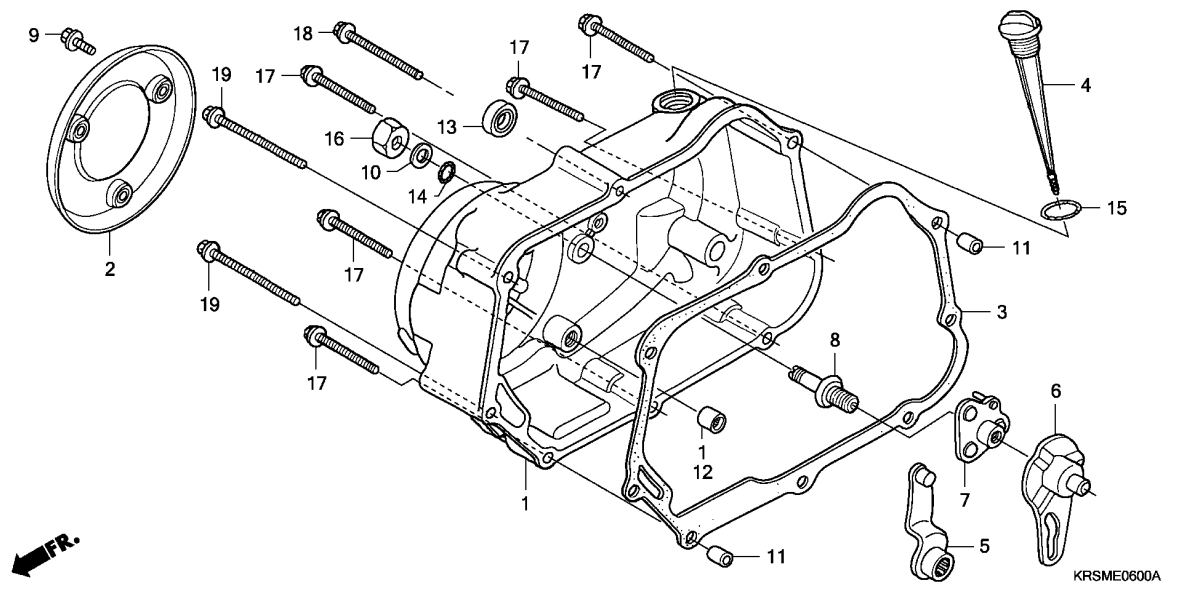


E-6

RIGHT CRANKCASE COVER

E 7



Ref. No.	L.O.N.	(Relative ref. Number) Description	F.R.T.
1	110159	COVER, CRANKCASE :RIGHT .....	0.8
3	110158	GASKET, CRANKCASE COVER :RIGHT .....	0.6
5	2121A7	LEVER, CLUTCH .....	0.7
6	2121A9	PLATE, CLUTCH CAM .....	0.6
7	2121C5	PLATE, CLUTCH CAM LIFTER .....	0.7
8	2121E3	SCREW, CLUTCH ADJUSTING .....	0.7
13	112105	OIL SEAL, KICK STARTER SPINDLE .....	0.6

Ref. No.	Part No.	Description	Reqd. QTY					Serial No.	Parts catalogue code
			NF100 4	5	6	ANF100 8	9		
1	11330-KFV-M20	COVER COMP., R. CRANKCASE .....	1	1	-	-	-		
	11330-KEV-900	.....	-	-	1	1	1		
2	11370-KFV-M20	PROTECTOR COMP., R. COVER .....	1	1	-	-	-		
	11370-KRS-600	.....	-	-	1	1	1		
3	11394-KFL-850	GASKET, R. CRANKCASE COVER ..	1	1	1	1	1		
4	15651-GN5-911	GAUGE, OIL LEVEL .....	1	1	-	-	-		
	15651-GN5-640	.....	-	-	1	1	1		
5	22810-GN5-910	LEVER COMP., CLUTCH .....	1	1	-	-	-		
	22810-KTL-740	.....	-	-	1	1	1		
6	22823-KFL-850	PLATE, CLUTCH LIFTER CAM .....	1	1	1	1	1		
7	22840-KFL-850	LIFTER COMP., CLUTCH .....	1	1	1	1	1		
8	22846-GN5-910	BOLT, CLUTCH ADJUSTING .....	1	1	1	1	1		
9	90004-GHB-610	BOLT, FLANGE, 6X12(NSHF) .....	3	3	-	-	-		
	90005-GHB-610	BOLT, FLANGE, 6X12 .....	-	-	3	3	3		
10	90485-040-000	WASHER, 8MM .....	1	1	1	1	1		
11	90702-KFM-900	DOWEL PIN, 8X12 .....	2	2	2	2	2		
12	91021-148-004	BEARING, NEEDLE, 1010(NTN) ..	1	1	1	1	1		
13	91202-KFL-841	OIL SEAL, 13.8X24X5 .....	1	1	1	1	1		
14	91303-001-000	O-RING, 8MM .....	1	1	1	1	1		
15	91307-035-000	O-RING, 18X3 .....	1	1	1	1	1		
16	94030-08000	NUT, HEX., 8MM .....	1	1	1	1	1		
17	96001-06040-00	BOLT, FLANGE, 6X40 .....	5	5	5	5	5		
18	96001-06065-00	BOLT, FLANGE, 6X65 .....	1	1	1	1	1		
19	96001-06080-00	BOLT, FLANGE, 6X80 .....	2	2	2	2	2		

