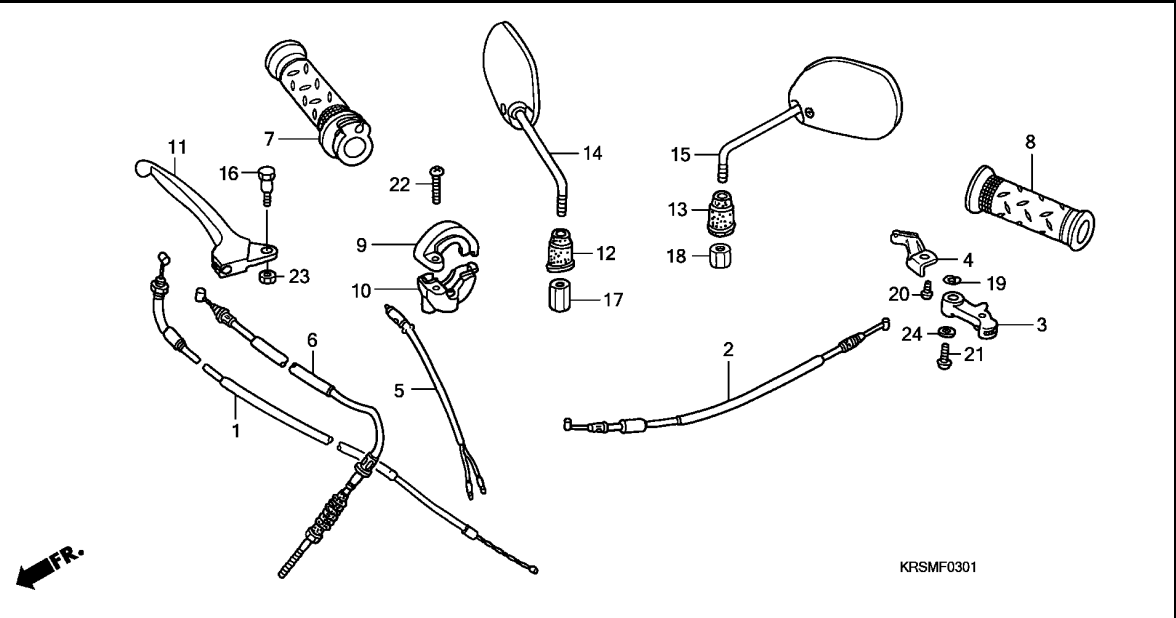


# F-3-1

# HANDLE LEVER/SWITCH/CABLE (ANF100DR/SR/MSR)

**G 8**



Ref. No.	L.O.N.	(Relative ref. Number) Description	F.R.T.
1	811100	CABLE, THROTTLE .....	0.6
2	811120	CABLE, CHOKE .....	0.4
3	810140	LEVER, CHOKE :HANDLE SIDE ....	0.1
5	6151B2	SWITCH, FRONT STOP .....	0.4
6	811125	CABLE, FRONT BRAKE .....	0.5
7	810150	GRIP, THROTTLE .....	0.4
8	8101C0	GRIP, HANDLE :LEFT .....	0.1
10	810155	HOUSING, THROTTLE .....	0.4
11	8101C7	LEVER, HANDLE :RIGHT .....	0.3

Ref. No.	Part No.	Description	Reqd. QTY					Serial No.	Parts catalogue code
			NF100 4	5	6	ANF100 8	9		
1	17910-KTL-740	CABLE COMP., THROTTLE .....	-	-	1	1	1		
2	17950-KFL-D00	CABLE COMP., CHOKE .....	-	-	1	1	1		
3	17961-KFM-900	LEVER, CHOKE .....	-	-	1	1	1		
4	17962-KFM-900	STOPPER, CABLE .....	-	-	1	1	1		
5	35340-KPH-901	SWITCH ASSY., FR. STOP .....	-	-	1	-	1	----- DRMA	
6	45450-KPH-670	CABLE COMP., FR. BRAKE .....	-	-	1	-	1	----- DRMA	
7	53140-KPH-970	GRIP COMP., THROTTLE .....	-	-	-	1	-		
8	53166-KFL-D20	GRIP, L. HANDLE .....	-	-	1	1	1		
9	53167-KFM-900	HOUSING, UPPER THROTTLE .....	-	-	1	1	1		
10	53168-KFM-900	HOUSING, UNDER THROTTLE .....	-	-	1	1	1		
11	53175-KPW-900	LEVER, R. STEERING HANDLE ...	-	-	1	-	1	----- DRMA	
12	88113-KET-900	CAP, LOCK NUT .....	-	-	-	1	-		
13	88113-KTL-740	CAP, LOCK NUT .....	-	-	1	1	1		
14	88210-KRS-940	MIRROR COMP., R. .....	-	-	1	1	1		
15	88220-KRS-940	MIRROR COMP., L. .....	-	-	1	1	1		
16	90115-KRS-690	BOLT, HANDLE LEVER PIVOT ....	-	-	1	-	1	----- DRMA	
17	90314-KFM-900	NUT, LOCK .....	-	-	-	1	-		
18	90314-KRS-690	NUT, LOCK .....	-	-	1	1	1		
19	90442-147-000	WASHER, WAVE .....	-	-	1	1	1		
20	93500-05010-0G	SCREW, PAN, 5X10 .....	-	-	1	1	1		
21	93500-05012-0G	SCREW, PAN, 5X12 .....	-	-	1	1	1		

**3**