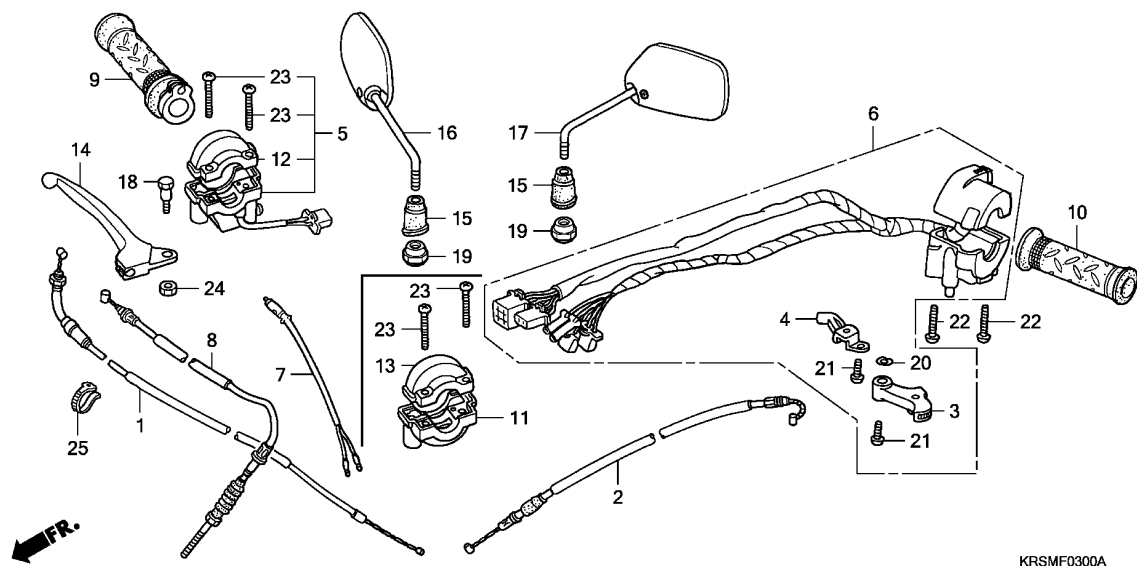


F-3

HANDLE LEVER/SWITCH/CABLE (NF100/M/DM/MDM)

G 7



Ref. No.	L.O.N.	(Relative ref. Number) Description	F.R.T.
1	811100	CABLE, THROTTLE	0.5
2	811120	CABLE, CHOKE	0.3
3	810140	LEVER, CHOKE :HANDLE SIDE	0.1
5	615116	SWITCH, STARTER	0.5
6	615118	SWITCH, WINKER	0.6
7	6151B2	SWITCH, FRONT STOP	0.3
8	811125	CABLE, FRONT BRAKE	0.4
9	810150	GRIP, THROTTLE	0.2
10	8101C0	GRIP, HANDLE :LEFT	0.1
11	810155	HOUSING, THROTTLE	0.3
14	8101C7	LEVER, HANDLE :RIGHT	0.1

3

Ref. No.	Part No.	Description	Reqd. QTY					Serial No.	Parts catalogue code
			NF100 4	5	6	ANF100 8	9		
1	17910-KRS-970	CABLE COMP., THROTTLE	1	1	-	-	-		
2	17950-KFL-D00	CABLE COMP., CHOKE	1	1	-	-	-		
3	17961-KEV-900	LEVER COMP., CHOKE	1	1	-	-	-		
4	17962-KPG-T00	STOPPER, CABLE	1	1	-	-	-		
5	35015-KEV-920	SWITCH SET, STARTER	1	1	-	-	-	----- MDMA, MMA	
6	35200-KRS-940	SWITCH ASSY., WINKER	1	1	-	-	-	----- DMMA, MA	
	35200-KRS-930	1	1	-	-	-	----- MDMA, MMA	
7	35340-KPH-901	SWITCH ASSY., FR. STOP	1	1	-	-	-		
8	45450-KRS-690	CABLE COMP., FR. BRAKE	1	1	-	-	-		
9	53140-KPH-970	GRIP COMP., THROTTLE	1	1	-	-	-		
10	53166-KFL-D20	GRIP, L. HANDLE	1	1	-	-	-		
11	53167-GE4-000	HOUSING, THROTTLE	1	1	-	-	-	----- DMMA, MA	
12	53168-KEV-920	HOUSING, UNDER THROTTLE	1	1	-	-	-	----- MDMA, MMA	
13	53168-166-000	HOUSING, THROTTLE	1	1	-	-	-	----- DMMA, MA	
14	53175-KPW-900	LEVER, R. STEERING HANDLE ..	1	1	-	-	-		
15	88113-KET-900	CAP, LOCK NUT	2	2	-	-	-		
16	88210-KRS-940	MIRROR COMP., R.	1	1	-	-	-		
17	88220-KRS-940	MIRROR COMP., L.	1	1	-	-	-		
18	90115-KRS-690	BOLT, HANDLE LEVER PIVOT	1	1	-	-	-		
19	90314-KET-900	NUT, LOCK	2	2	-	-	-		
20	90442-147-000	WASHER, WAVE	1	1	-	-	-		
21	93500-05010-0G	SCREW, PAN, 5X10	2	2	-	-	-		
22	93500-05020-0G	SCREW, PAN, 5X20	2	2	-	-	-		
23	93500-05025-0G	SCREW, PAN, 5X25	2	2	-	-	-		
24	94001-05000-0S	NUT, HEX., 5MM	1	1	-	-	-		
25	95014-62100	BAND B1, WIRE	2	2	-	-	-		