

## Low Fuel Indicator and Reserve Fuel Consumption

When the remaining fuel reaches the reserve supply level, the low fuel indicator (1) comes on and the amount of reserve fuel used is displayed with blinking to show that you should refuel.

The amount of fuel left in the tank when the low fuel indicator lights with the vehicle set upright is approximately:

3.5 ℓ (0.92 US gal , 0.77 Imp gal)

The reserve fuel consumption (2) is displayed in the lower segment of the multi-function display (3) from 0.0 “l (liter)” or “gal (gallon)”.

When the amount of consumed fuel is more than 1.0 ℓ (0.26 US gal, 0.22 Imp gal) the display blinks faster.

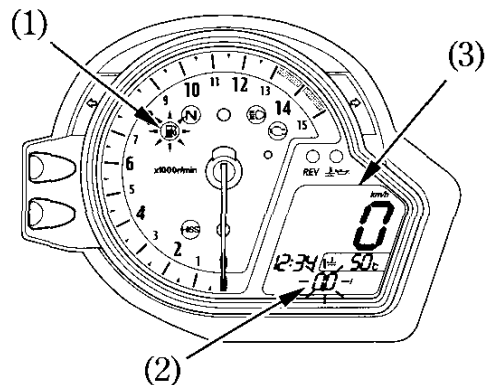
If you change the display to odometer, tripmeter and so on (page 32 ), it will return to the reserve fuel consumption after about 10 seconds.

When the reserve fuel consumption is displayed you should refill the tank as soon as possible.

After refueling more than the reserve amount, the display returns to normal when the ignition switch has been ON for about a minute.

< E type only >

The unit of the indication depends on the unit which you select (page 39 ).



- (1) Low fuel indicator
- (2) Reserve fuel consumption
- (3) Multi-function display